

Welcome to the Hobart Model Aero Club (HMAC)

We welcome anyone to the club that is interested in the sport of aeromodelling and welcome their friends and family also. It is a social club and you will hopefully find that most members are very friendly and happy to help you with any questions you might have.

You will likely hear our club referred to as “HMAC”.

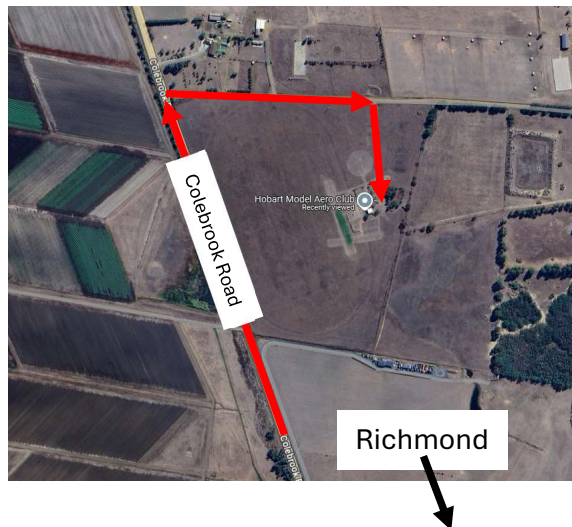
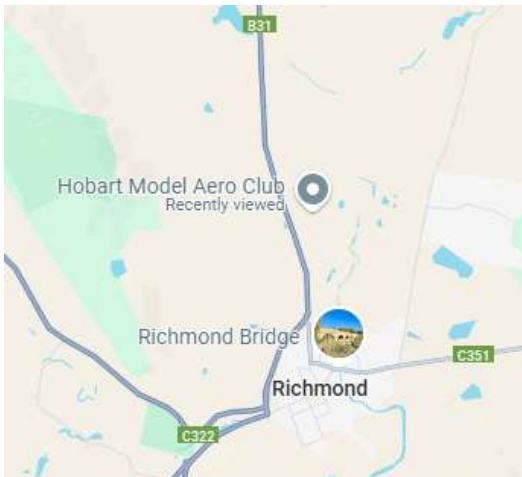
We have a website and Facebook site:

<https://www.hobartmodelaeroclub.org.au/>

<https://www.facebook.com/HobartModelAeroClub>

Visitors are always welcome at the club, however as long as you are a non-member, please ensure you sign the visitors log in the club house on arrival and let someone know you are there.

The club is located at 142 Colebrook Road, Richmond, just a few minutes out of Richmond town. Look for the club sign on the roadway as you head along Colebrook Road and turn right onto the side road. You will see a sign at the gate to enter the site. Please drive slowly along the side road, driveway and within the car parking area. The gate will usually be open if members are already on-site (only members have the gate lock code).



Most members are at the site when the weather is good (calm winds and not raining) and flying usually takes place in the mornings, from 8am. Typically winds are from the Northwest and begin to increase by the middle of the day. Sundays are our usual club flying day and when you are most likely to see members at the club, but Saturday and Monday mornings are popular also with many members.

SAFETY:

Safety is our number one concern. Please ensure you follow all safety signs and stay within the designated areas.

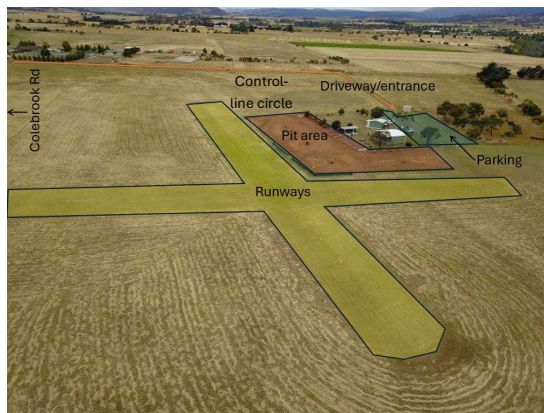
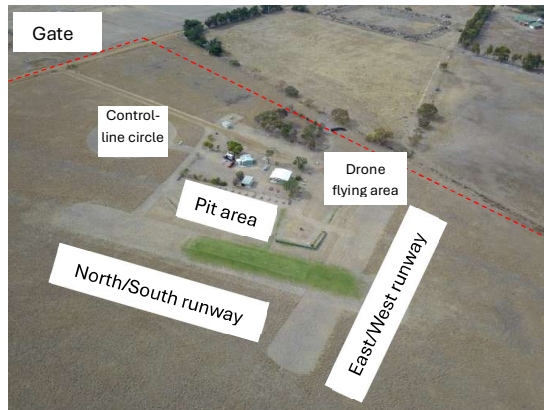
Only endorsed pilots (have their “wings”) who are insured to fly are allowed to fly at our club, with the exception of visitors and students under instruction. We have encouraged our members to ask for evidence of membership if they see a person they don’t know flying at our club.

Children (under the age of 18 years) must be accompanied by an adult. Some of our members are registered with a ‘Working with Vulnerable People’, but it is not a requirement that all members are registered.

NOTE FOR NEW MEMBERS FROM ANOTHER MAAA AFFILIATED CLUB: If you are a new member coming to us from another club and already hold an endorsement to fly, you will be required to demonstrate your abilities in a check flight with a qualified club Instructor before being allowed to fly solo. This might not be necessary if your endorsement details can be demonstrated on the MAAA register or you can provide sufficient evidence of your endorsement/s to satisfy the Committee. If you haven’t flown for a significant period of time we may still require you to undergo a check flight, as determined by the Committee at the time of ratifying your membership.

OUR FACILITIES:

We have designated areas for model preparation, taxiing, flying remote controlled fixed wing models (North/South and East/West runways), control-line models and multi-rotors (drones).



LEARNING TO FLY:

It can be a daunting thought...just remember even the most skilled RC pilots were all beginners once upon a time.

Learning to fly isn't as difficult as it might seem and at HMAC, learning to fly is FREE!

Our club has highly skilled Instructors and two club trainer models that are set up on as a "buddy" system. This is a training tool that allows an experienced pilot to teach a less experienced trainee, involving two transmitters to control one RC aircraft. The instructor can monitor and take control of the aircraft if needed at the flick of a switch. The trainee needs not worry about losing control.

There is no expectation to buy a model until you are proficient at flying with an Instructor. It is a good idea to talk with your Instructor and other club members before making a purchase of a model and radio gear as they can point you in the right direction. Typically, your first purchase would be a suitable trainer model which is capable of taking you to the next step. A review of some recommended first models are provided at the end of this document.

Our Instructors are very important people at our club and without them our club wouldn't exist. It is essential that students are respectful to their Instructor and follow their directions at all times, for safety reasons. Please also keep in mind that our Instructors are all volunteers and you will need to coordinate with them to find a time that suits both of you to learn to fly.

GETTING YOUR WINGS:

After a number of instructional flights, once you have acquired and demonstrated the appropriate skills needed to safely operate a model, you will be ready to undertake an assessment flight by an instructor where you will be required to undertake certain tasks and manoeuvres to satisfy the Instructor you are ready to be endorsed (also known as "getting your wings").

There are several levels of endorsement – Bronze, Silver and Gold wings. A Gold wing pilot can then undertake appropriate training to become an endorsed Instructor.

Any HMAC member with a current endorsement (i.e. has their "wings") can provide instruction, however only our endorsed Instructors can conduct a final flight assessment and endorse other members to fly.

BECOMING A HMAC CLUB MEMBER:

There is no expectation for you to become a club member the first time you visit the club. We expect you might come along a few times as a visitor and then decide if our club is for you.

Membership includes HMAC club subs (which we try to keep to a minimum) and MAAA membership (who arranges insurance related to flying models on our behalf) and also pays for TMAA membership.

MAAA - National aeromodelling body - <https://www.maaa.asn.au/>

TMAA - Tasmanian aeromodelling body - <https://tasmodelaero.com/>

Once you become a member you will access to all site facilities.

HMAC WEATHER STATION AND CAMERAS:

HMAC has a personal weather station installed. The data from this station can be accessed via our website or via the 'Weather Underground' website, as follows:

<https://www.hobartmodelaeroclub.org.au/weather/>

<https://www.wunderground.com/dashboard/pws/IRICHM303>

HMAC also has a number of cameras in use at the site. These cameras provide the dual function of added security in addition to allowing members to view the live feed to gauge the current weather conditions (several cameras show the windsock). This is great for our members who live a considerable distance from the field and have to weigh up the risk of travelling a long way versus the chance of being able to fly when they get to the club to make their trip beneficial.



APPROPRIATE BEHAVIOUR AT HMAC:

HMAC has a 'Code of Conduct' which must be strictly adhered to by all members.

Our Code of Conduct helps ensure all members are treated with respect and dignity so that our club is a safe place for all to enjoy.

There is no excuse for poor behaviour. Reported instances of poor behaviour will be dealt with by the Committee and may result in removal of the member from the club.

RULES (RULES and MORE RULES):

Model aircraft can be dangerous. Out-of-control models can cause injuries and property damage. They can also pose a risk to other aircraft and people on the ground. Safety regulations and responsible operation are crucial to minimize these risks.

As a member of the Model Aeronautical Association of Australia (MAAA) we are bound by certain regulations at the club.

HMAC has their own 'Operations Manual' – the rules outlined in this manual must be adhered to or risk losing your membership.

Specific HMAC rules to be aware of include:

- **Flying is not allowed prior to 8am on Mondays-Saturdays**
- **Flying is not allowed prior to 9am on Sundays**
- **Flying after the sun sets is not allowed**
Flying is not allowed after 8pm on any day regardless of the time of year
- **Flying is not allowed on 'Total Fire Ban' days (as determined by the 'Tasmania Fire Service' - <https://www.fire.tas.gov.au/>)**
- **Only HMAC members are allowed within specifically marked restricted areas at the club (e.g. pits, taxiing areas and runways).** Visitors accompanied by an HMAC member are allowed in these areas, on the condition that all safety rules are adhered to.
- **Ensure that the model aircraft is always within visual line of sight and maintain control at all times.**

General safety risks to be aware of include:

- **Risk to People:**

Out-of-control models can collide with people, especially if they are not flying at a safe distance or height.

- **Risk to Property:**

A crashed model can damage property, especially if it's flying at an unsafe altitude or speed.

- **Collision with Other Aircraft:**

Model aircraft can pose a risk to manned aircraft, especially if they are not flying at a safe distance or height, or if they are flying in the vicinity of an airport.

- **Weather Conditions:**

Model aircraft can be affected by weather conditions, such as strong winds or turbulence, making them difficult to control and increasing the risk of crashes. Avoid flying in strong winds or other adverse weather conditions that could make the model difficult to control.

- **Battery Fires:**

Lithium batteries used in model aircraft can be prone to fires if not handled properly, which can damage property and cause injuries. Store and charge lithium batteries safely, and avoid overcharging or damaging them.

Help to ensure safety at the site by:

- **Follow safety regulations:**

Adhere to local regulations and guidelines regarding model aircraft operation, including altitude limits and prohibited zones.


- **Be aware of surroundings:**

Maintain situational awareness and avoid flying near people or property.

- **Keep aircraft under control:**

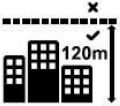
Ensure that the model aircraft is always within visual line of sight and maintain control at all times.

In addition to our own club rules, you also need you to abide by the regulations set out by the aviation regulatory body (CASA). Specifically, when flying drones:




KNOW YOUR DRONE


FLYING FOR FUN: DRONE SAFETY RULES




You must not fly your drone higher than 120 m above ground level.




You must keep your drone at least 30 m away from other people and never fly over a person.




You must only fly one drone at a time.




Only fly during daylight hours.




You must not fly in a populous area. This includes beaches, parks, events, or sport ovals during games.




You must not fly your drone in a way that creates a hazard to another aircraft, person or property. Respect others' privacy.




Keep your drone within visual line-of-sight. This means you must always be able to see it with your own eyes (not through a device, screen or goggles). Don't fly through cloud, fog or smoke.




You must not fly your drone over or near areas affecting public safety or where emergency operations are underway. This includes ambulance, police, search and rescue, or firefighting efforts.




If your drone weighs more than 250 g, you must not fly within 5.5 km of a controlled airport (airports with control towers). If it's 250 g or less, you can fly up to 45 m high within 5.5 km but stay out of the airport boundary and don't create hazards for other aircraft. Regardless of weight, stay clear of the runway approach and departure paths.



Near smaller airports without control towers, you can fly your drone within 5.5 km. If you become aware of crewed aircraft nearby, move away and land your drone quickly and safely.



If you're within 1.4 km of a helicopter landing site and become aware of a helicopter nearby, taking off or landing, you must move your drone away and land it safely.



If you fly your drone for work (commercially), extra rules apply. You must register your drone and get a licence or accreditation. If you only fly for fun, no registration or accreditation is needed.

2504564

KNOWYOURDRONE.GOV.AU

Source: <https://www.casa.gov.au/sites/default/files/2021-07/know-your-drone-flying-for-fun.pdf>

We look forward to meeting you one day at the club. If you are interested in joining or meeting up with one of our instructors for some training flights, please email me. A membership form, current Schedule of Fees, Code of Conduct and Operations Manual will also be sent to you, if you decide one day to join up with our fantastic club. I have also provided a document with the names of our Committee members, Safety Officers and Instructors.

Regards,

Charlie

HMAC Secretary

hmacsec@gmail.com